

# WaterSep

## Explorer12 GreenLine

### Single Use HF Cartridge Bag Assembly Easy and Reliable

The **WaterSep GreenLine** is true bag based, fully integrated single use cross flow system, with tubing, bags, a feed/retentate manifold, pressure sensors and flow control via a peristaltic pump. See illustration 1 below. Like the individual WaterSep single HF cartridges, the **Explorer12 GreenLine** is plug-and-play at its best, ready to use without any pre-rinse or sanitization, connect, use and discard!

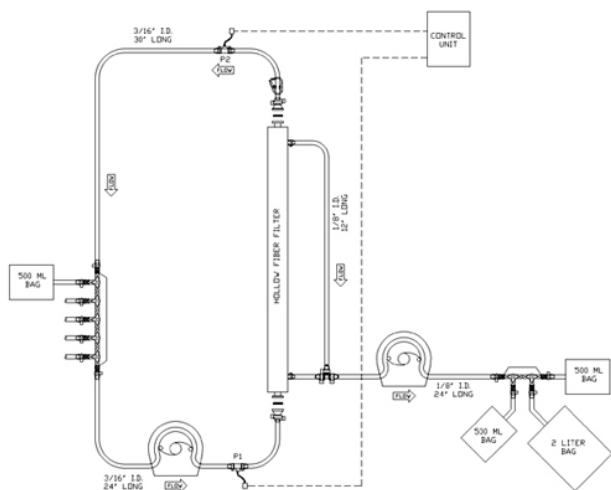
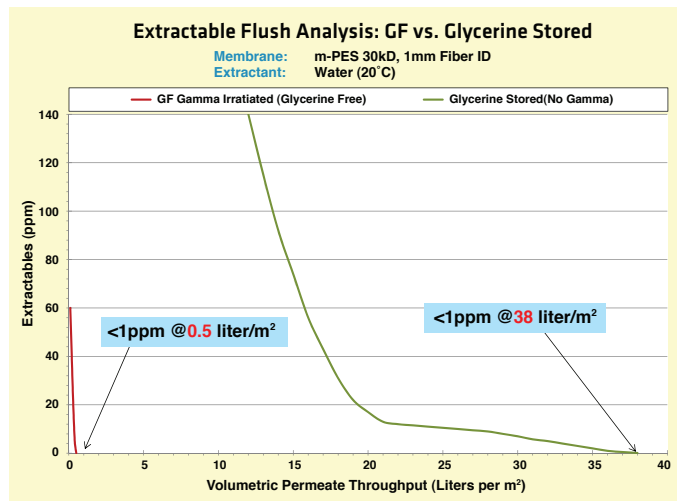


Illustration 1. Green Line Hollow Fiber Cartridge Assembly

The extractable level is approximately 80x less than a glycerin conditioned membrane, (see graph at right), and after a quick buffer conditioning the **Explorer12 GreenLine** assembly is ready to use.

The **Explorer12 GreenLine** hollow fiber assemblies are ideal for rapid clarification of cell cultures, fermentation solutions and virus/vaccine suspensions, as well as concentration/diafiltration of peptides, enzymes, antibodies and other proteins as well as viruses.

Recommended sample volume for the **Explorer12 GreenLine** is 150 ml - 750 ml.



### ORDERING INFORMATION

Replace XXX with 005 for 5K, 010 for 10K, 030 for 30K, 050 for 50K, 100 for 100K, 300 for 300K, 500 for 500K, 750 for 750K, 910 for 0.1µm, 920 for 0.2µm, 945 for 0.45µm.

SA XXX 10EXP12 S3

*Explorer12 GreenLine, Single Use Hollow Fiber Assembly, membrane surface area 155 cm<sup>2</sup>, with (3) pressure transducers and (1) back pressure control clamp. 3/16" ID silicone tubing (1) 500 ml feed/retentate bag, (2) 500 ml permeate bags and (1) 2 L permeate bag. 6/pkg*

SA XXX 10EXP12 S6

*Explorer12 GreenLine, Single Use Hollow Fiber Assembly, membrane surface area 155 cm<sup>2</sup>, with (3) pressure transducers and (1) back pressure control clamp. 3/16" ID silicone tubing (1) 500 ml feed/retentate bag, (2) 500 ml permeate bags and (1) 2 L permeate bag. 6/pkg*

**CARTRIDGE DIMENSIONS:** ½" (13 mm) x 12.3" (312 mm)  
**MEMBRANE SURFACE AREA:** 0.16 ft<sup>2</sup> (155 cm<sup>2</sup>)

**MOLECULAR WEIGHT CUT-OFF:** Modified-PES; 5kD, 10kD, 30kD, 50kD, 100kD, 300kD, 500kD, 750kD

**MEMBRANE PORESIZE:** 0.1µm, 0.2µm, 0.45µm.

### MATERIALS OF CONSTRUCTION

**MEMBRANE:** Modified Polyethersulfon  
**HOUSING:** White Polysulfon  
**ENCAPSULANT:** FDA-compliant urethane

### CONNECTIONS

**FEED/RETENTATE:** ½" TC  
**PERMEATE:** Barbed House